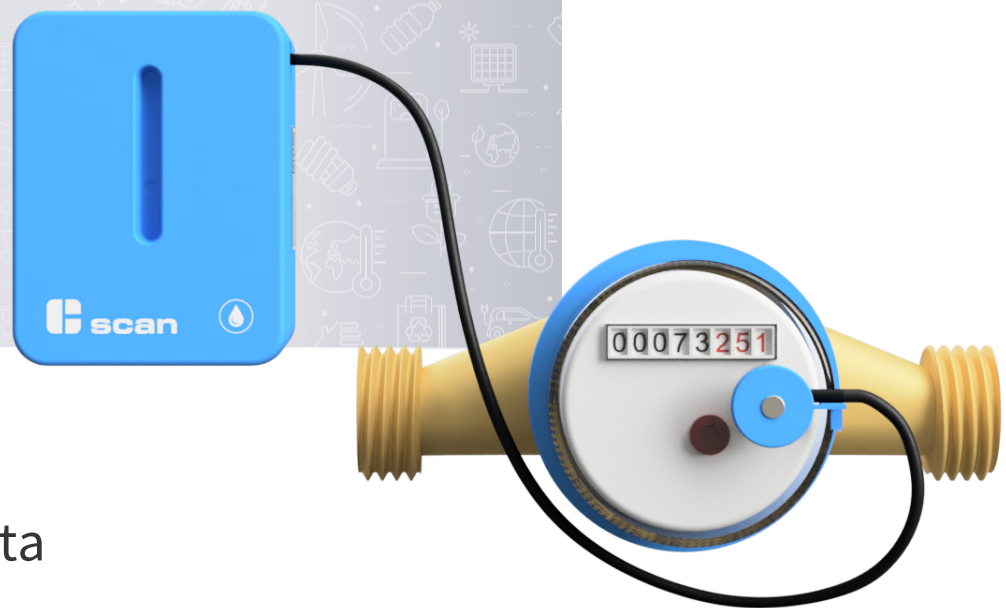


Relaysense Water Sealed

EWM4-1

The EWM4-1 Relaysense Water Sealed sensor is designed to be connected to water meters from the company Bonega. The sensor has one probe and the main measured data is the water consumption in liters. The sensor is battery-powered and transmits the measured data wirelessly via the gateway to the cloud.



Technical data

| | |
|-------------------------------|--|
| Measured data | water consumption [L] |
| Physical dimensions | 85 × 65 × 45 mm |
| Weight | 250 g (including batteries) |
| Material | ABS plastic |
| Protection | IP66 |
| Working conditions | from -20 °C to + 60 °C, < 100 % RH |
| Interface | 1× probe EWC1 (fixed), probe cable approx. 50 cm |
| Required accessories | gateway EWG6, Bonega water meter |
| Optional accessories | holder |
| Power supply | 2× Alkaline C 1.5V |
| Battery life | > 2 years (max. 5 years) |
| Interaction | vibrations |
| Connectivity | 433MHz Radio (Chirp protocol) |
| Radio range | < 100 m (depending on the local conditions) |
| Transmitting power | < 10 mW |
| Transmission time | < 5 ms |
| Transmission period | 5 s |
| Resolution of metering | 1 L |
| Accuracy of metering | 1 L |
| Range of metering | 32-bit impulse counter; > 1 ms pulse width |